

clean energy starts with

ceres

**COLLABORATION TO DELIVER
CLEAN ENERGY**

16th November 2021



A photograph of a modern building with a glass and steel structure. The building has a white brick facade on the left and a green glass facade on the right. The sky is blue with some clouds. The text "Imperial College London" is visible on the white brick wall.

Imperial College
London

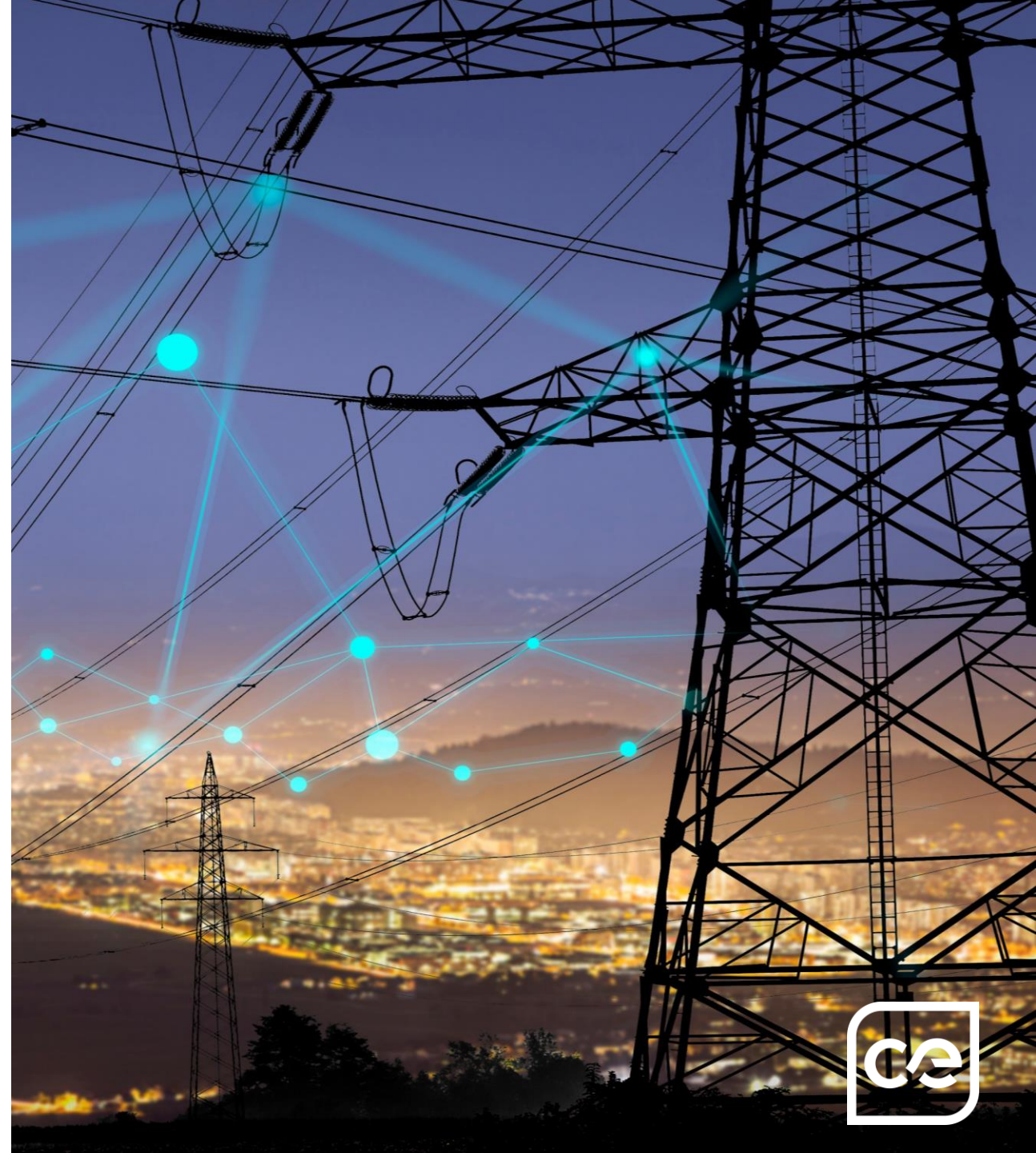
- High growth UK technology licensing company with world-class partners
- World leading solid oxide technology – Imperial College
- Unique IP ~95 Patent families
- High-margin, capital light technology licensing business model
- Listed on AIM ~£2bn market cap

OUR PURPOSE

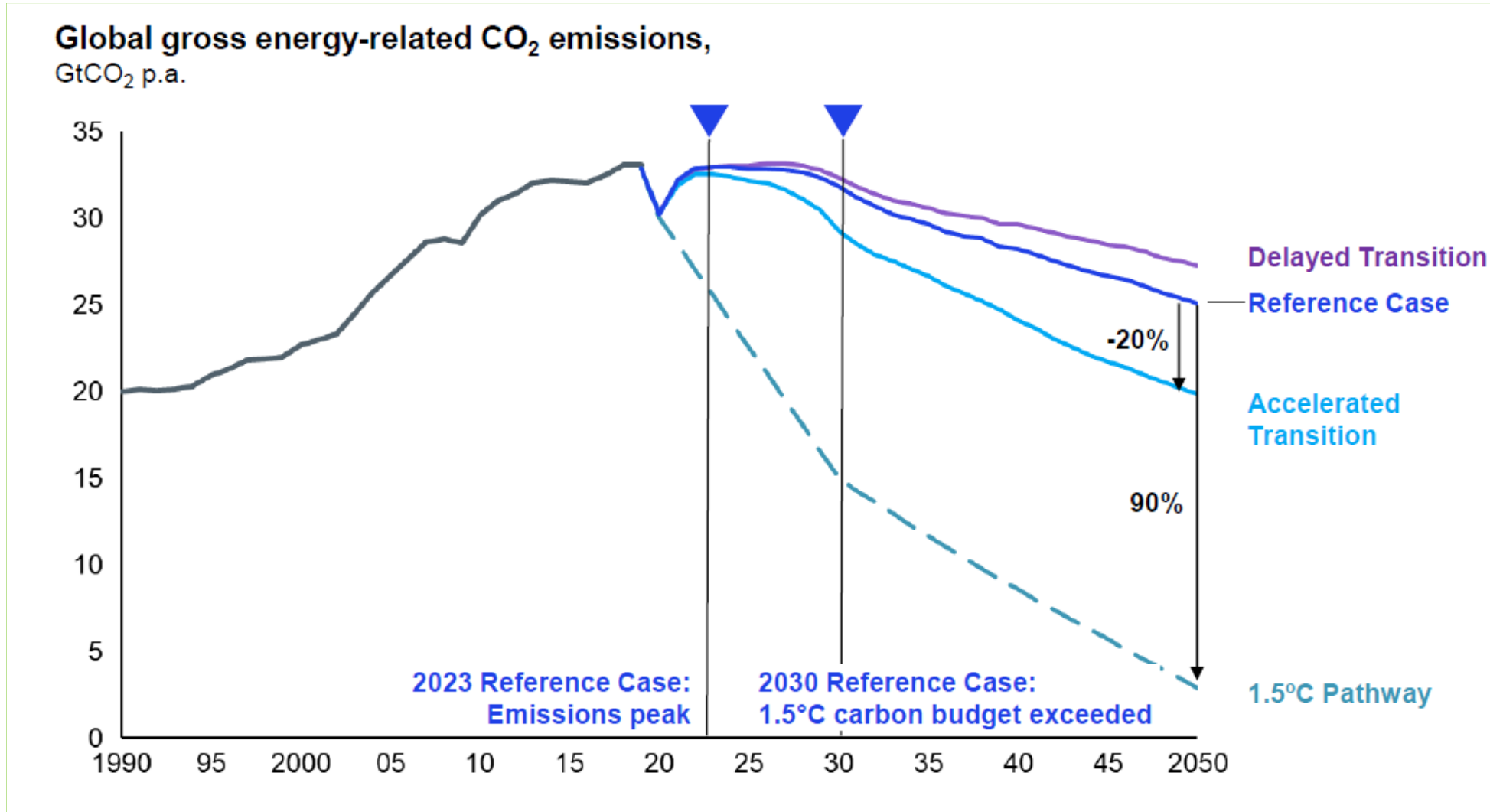
Ceres' purpose is to help sustain a clean, green planet by ensuring there is **clean energy everywhere** in the world...

..we **collaborate** with the world-leading companies to deliver innovative technology

....at **scale and pace**



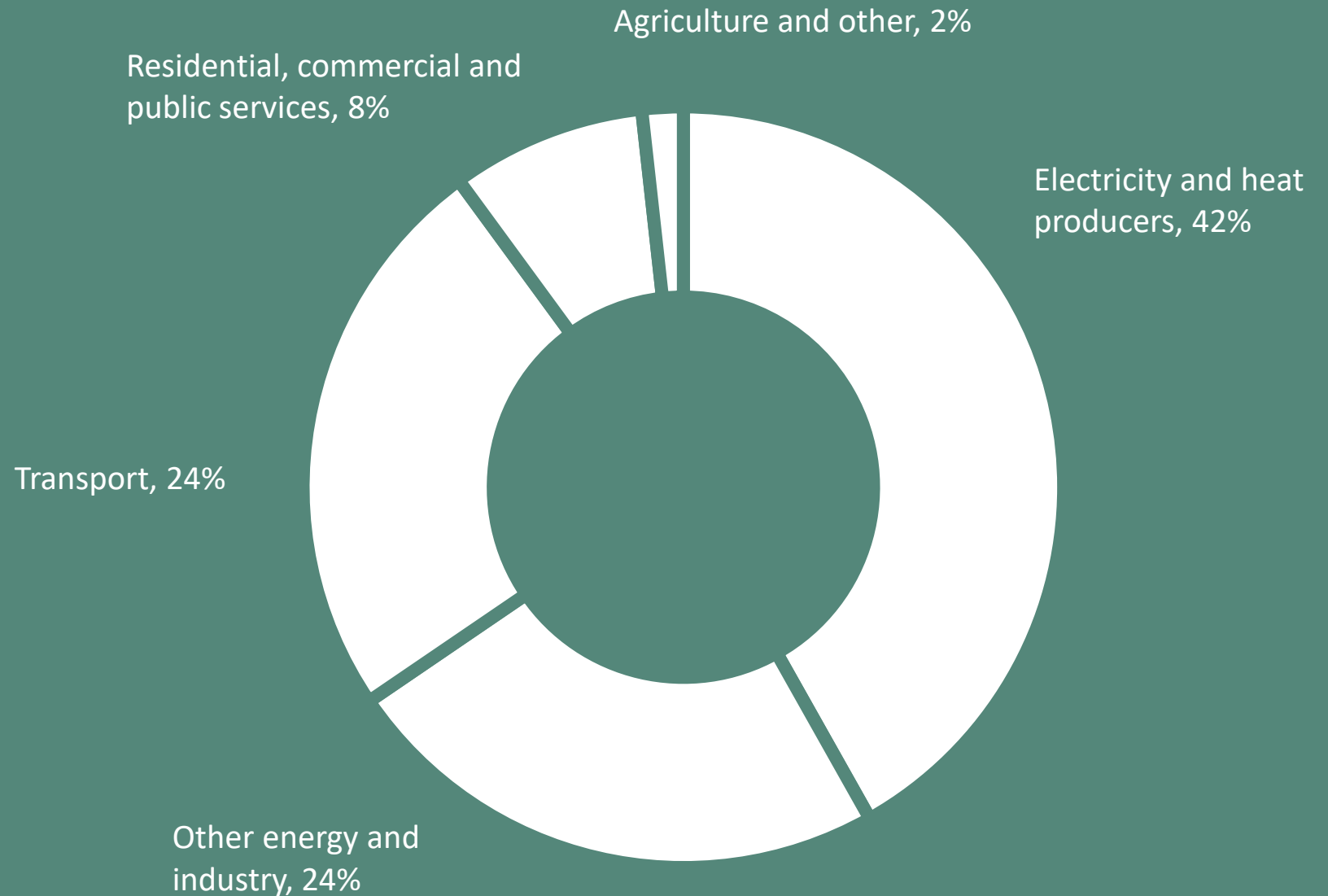
WE ARE NOT ON TRACK TO ACHIEVE A 1.5°C FUTURE

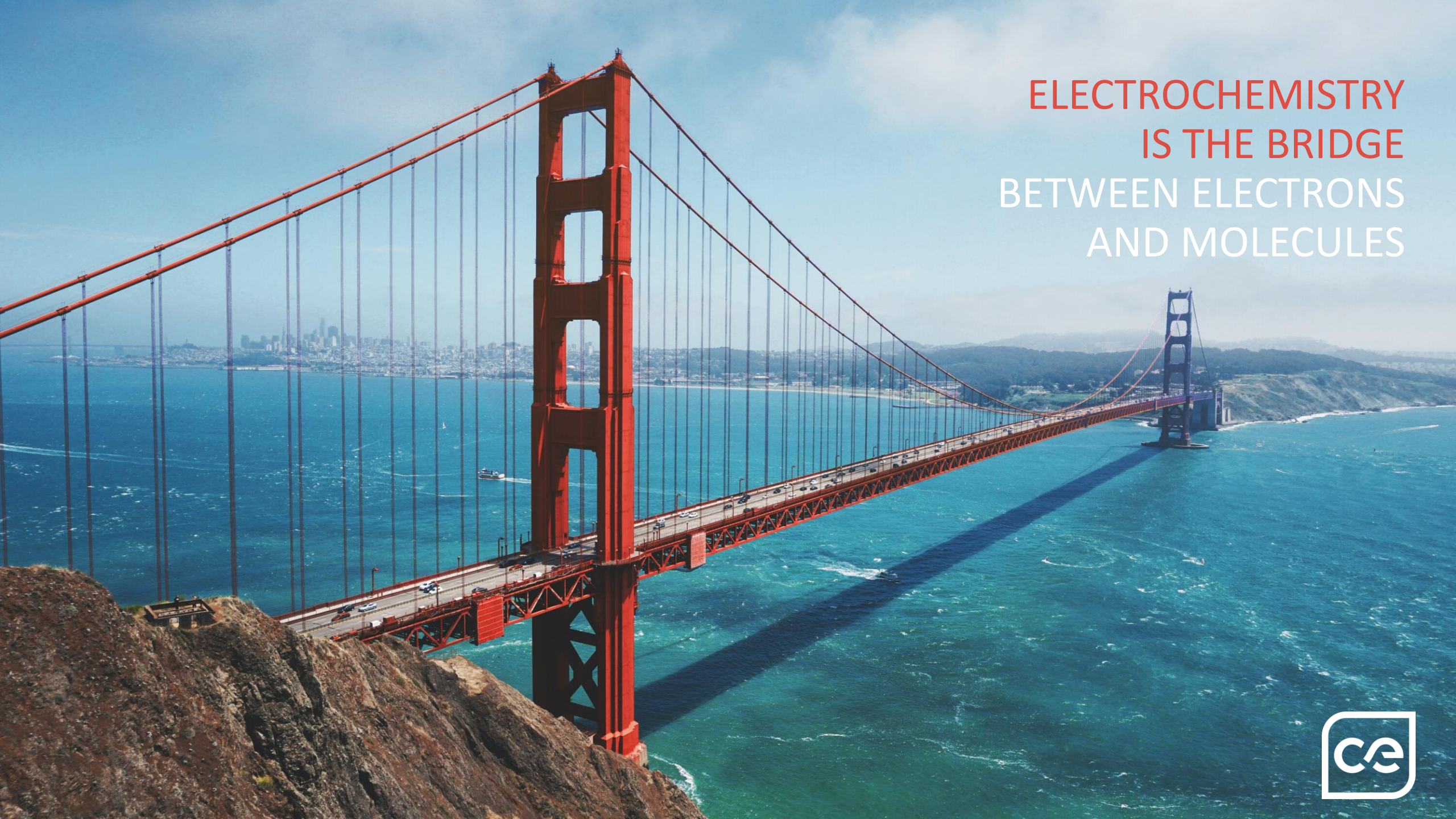


Source: McKinsey & Company

HYDROGEN DECARBONISES THE SECTORS THAT CAN'T BE DIRECTLY ELECTRIFIED

Predicted to account
for ~18% of primary
energy and create a
~\$2.5tn market
opportunity

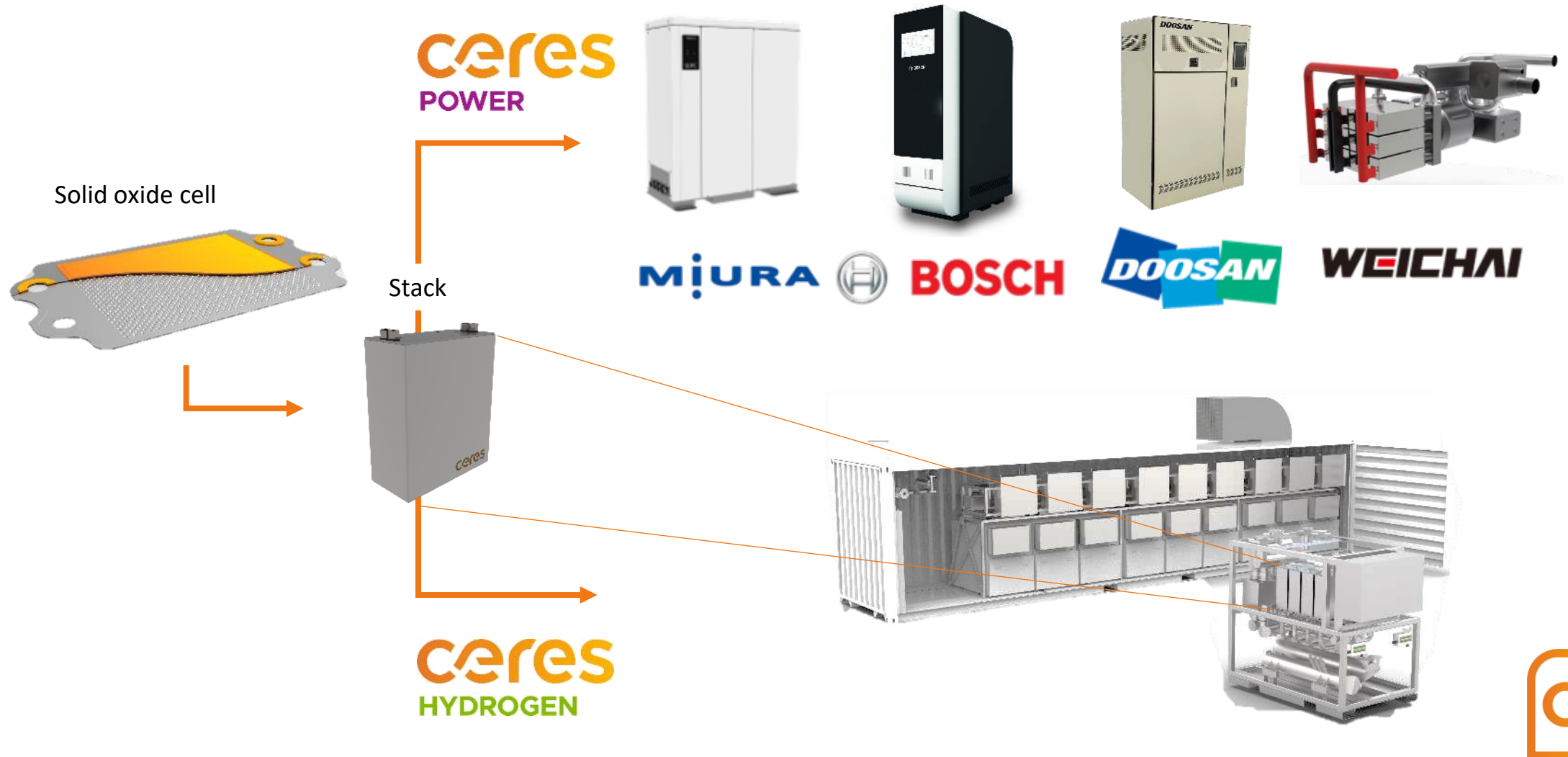


An aerial photograph of the Golden Gate Bridge, showing its iconic orange-red towers and suspension cables. The bridge spans across the blue-green waters of the San Francisco Bay, with the city skyline visible in the distance under a clear blue sky. The bridge's shadow is cast onto the water below.

ELECTROCHEMISTRY
IS THE BRIDGE
BETWEEN ELECTRONS
AND MOLECULES



TECHNOLOGY TO DECARBONISE MULTIPLE APPLICATIONS THROUGH GLOBAL PARTNERSHIPS





ELECTRICITY AND HEAT PRODUCERS
ACCOUNT FOR 42% OF GLOBAL CARBON
EMISSIONS



One system from one source

Bosch & Ceres joint collaboration

Bosch own development

(SOFC) Cell



ceres *

 **BOSCH** **

(SOFC) Stack



ceres *

 **BOSCH** **

(SOFC) Unit



 **BOSCH** **

(SOFC) Nano Grid Supply



Up to several MW_{el}

 **BOSCH** **

* Focus on development
** Focus on industrialization

Bosch will provide SOFC units which can be integrated into Nano grid supply systems

BOSCH PLANS TO SCALE TO 200MW PRODUCTION FOR MULTIPLE APPLICATIONS



957 Lahm
916 Gaustadt
916 Gaustadt
16:20

Abfahrt
sofort
16:40
16:50

909 Hain



GLOBAL PARTNERS



BOSCH



WEICHAI

AVL



MiURA



A large group of people, likely employees, are posed on a set of wide concrete stairs. They are arranged in many rows, filling the frame. Most of them have their hands raised in a wave, and many are smiling. The background is a plain, light-colored wall. The overall tone is positive and energetic.

WE ARE
COMMITTED

Proud to be a UK technology company
with 500 passionate scientists and
engineers partnering with global giants of
industry to deliver a net zero future.

CLEAN ENERGY FOR A CLEAN WORLD

ceres